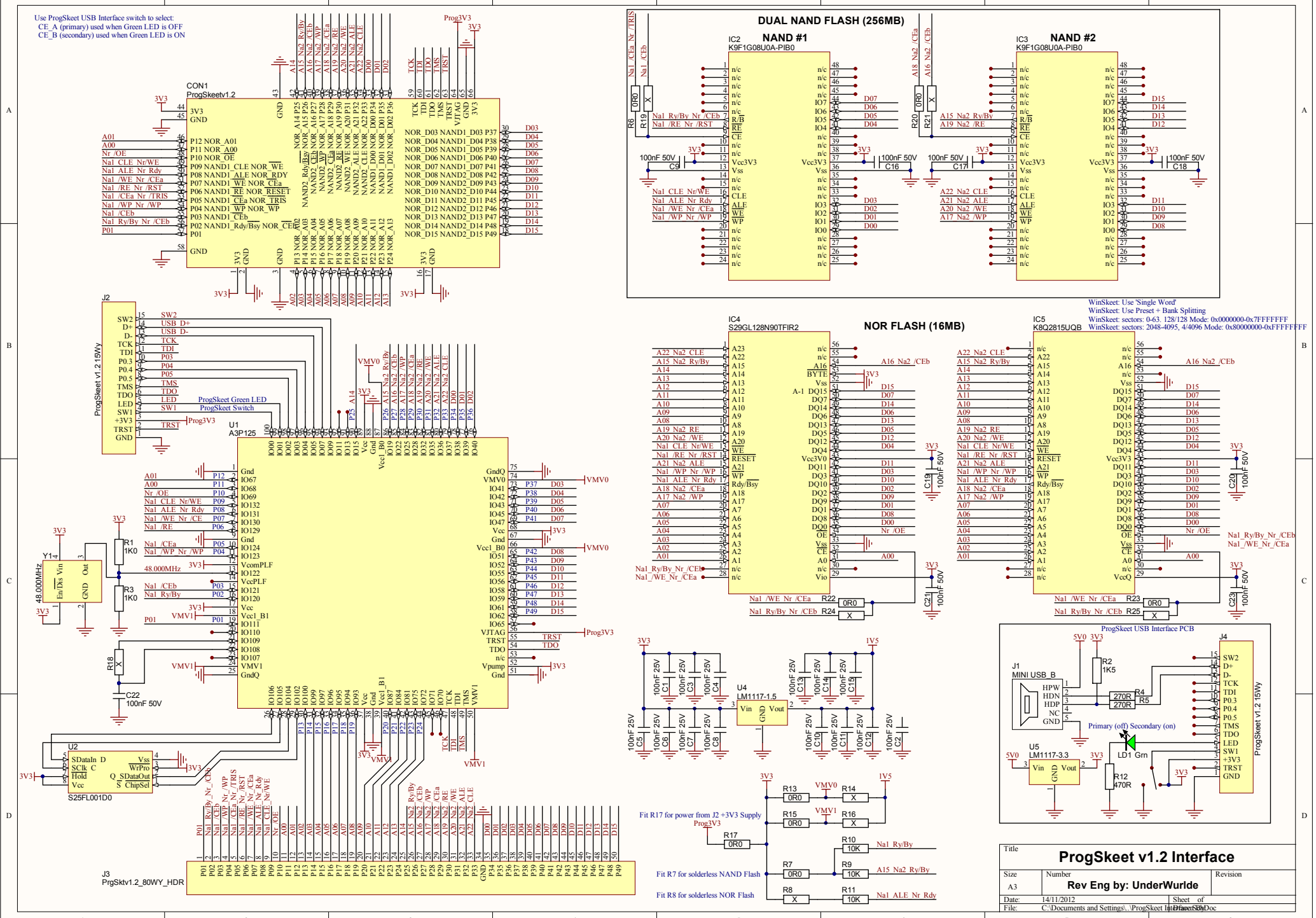


Use ProgSkeet USB Interface switch to select:
 CE_A (primary) used when Green LED is OFF
 CE_B (secondary) used when Green LED is ON



| | | |
|---------------------------------|---|----------|
| Title | | |
| ProgSkeet v1.2 Interface | | |
| Size | Number | Revision |
| Rev Eng by: UnderWurld | | |
| Date: | 14/11/2012 | Sheet of |
| File: | C:\Documents and Settings\...ProgSkeet v1.2 Interface PCB | Doc |